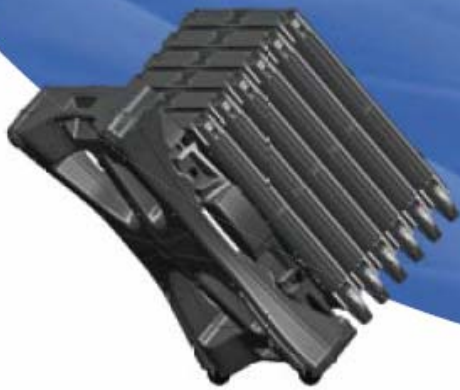


IMI scope

PORTABLE PROTECTION

*The world's most versatile
walkthrough metal detector!*



security • INTELLIGENT • DYNAMIC • EFFECTIVE • solutions



portable performance

MM SCOPE



PORTABLE DIMENSIONS

- 37" (.9 m) x 23" (.58 m) x 26" (.66 m)

ENVIRONMENTAL DESIGN SPECIFICATIONS

- Temp -20 C to +70 C (-4F to +158 F)
- Relative Humidity 95%
- Rainproof IP55
- UV resistant

WARRANTY

- 24 months parts and labor

PATENTS PENDING

WARNING: All metal detectors should only be used by trained personnel who have a thorough understanding of their operation. If the user of a metal detector does not follow the operating manual and the unit is not set up properly, it can allow metal objects to pass through undetected.

INTELLIGENT

USER FRIENDLY CONTROL PANEL WITH PROGRAMMABLE MEMORY

- Digital I/O
 - Keypad with security access control (lock out)
 - LED bar graph for target strength
 - LCD for keypad interaction
- Adjustable volume control
- Memory feature for location specific user settings
- Self test/automatic calibration at turn ON
- Last setting memory & audio indicator when turned OFF
- Transit counter

SPLIT COGNITIVE IN FORM & FUNCTION

- Specialized design allows operator to monitor surrounding areas

DYNAMIC

SINGLE PERSON PORTABILITY

- Weighs approximately 90 lbs.
- Assemble/disassemble in only 5 minutes
- Single person setup

EFFECTIVE

HEAD TO TOE, ZONE SPECIFIC DETECTION

- 3 sensor zones with LEDs

100 LEVELS OF ADJUSTABLE SENSITIVITY

- Designed to meet your level of need

DESIGNED FOR USE IN DEMANDING ENVIRONMENTS

- Indoor or outdoor use
- ABS polycarbonate alloy - for high impact strength and durability
- Battery operated (includes AC adapter & recharge kit)
- 40 Hour battery life
- Multiple units may work within close proximity to one another
- Designed to meet regulatory standards:
 - FAA, NILECJ-0601.00
- Designed for EMC compliance (CE)



security solutions **FISHER LABS**

TOLL FREE 1.800.685.5050 www.fisherlab.com

T 209.826.3292 F 209.826.0416 info@fisherlab.com

200 West Willmott Road Los Banos, California 93635-5501

FRL48760004-A



● **ENVIRONMENTAL PACKAGES**

Fisher recommends that all M-scope units intended for outdoor use be used in conjunction with our environmental packages.

EnviroPack A - includes the pop up shelter, mat and bases with built-in levelers.

EnviroPack B - includes the pop up shelter & mat



● **Pop Up Shelter #2036542**

A 5' x 5' shelter ideal for outdoor use. This lightweight Pop Up Shelter folds compactly for quick and easy transport.



● **CW-10 Hand-Held Concealed Weapons Detector**

#1410 Hand-held precision locator for all types of metal in a highly durable package. Designed for stand alone use or in conjunction with Fisher's M-Scope Portable Walk-Through Metal Detector.



● **Bases with Built-in Levelers #2036511001**

Located under the bases, the levelers provide extra stability on uneven surfaces.



● **Y Cable Assembly #1508957**

Allows both batteries to be charged at once when the unit is in the collapsed/portable configuration.



● **Floor Mat #2036541**

A heavy duty floor mat to minimize dirt in outdoor setups. Also provides a "footprint" for easy M-scope setup.

● **Operational Test Piece #8000500**

Designed to FAA specifications



security solutions **FISHER LABS**

TOLL FREE 1.800.685.5050 www.fisherlab.com
 T 209.826.3292 F 209.826.0416 info@fisherlab.com
 200 West Willmott Road Los Banos, California 93635-5501



● **Protective Bag/Dust Cover #2036531**

A durable protective cover for transportation or storage.

FL1870012-A

security • INTELLIGENT • DYNAMIC • EFFECTIVE • solutions

For further info and price quote, please contact:

MDI Canada

21 Deepglade Cr. Toronto, Ontario, M2J 1B3, Canada

Tel: 1-416-916-1558, Fax: 1-416-916-1666

E-mail: info@mdicanada.ca mdicanada@rogers.com

Website: www.mdicanada.ca