

INSPECT THE DEPTHS...



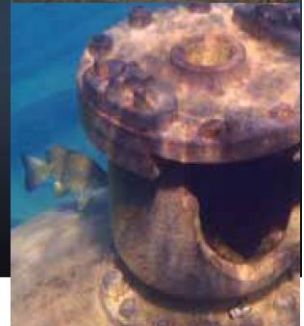
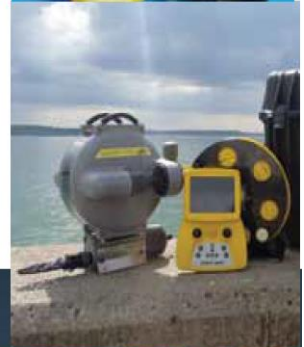
DEEP TREKKER DTG2 WORKER PACKAGE FACT SHEET

COMPLETE MORE WORK, ANYWHERE.

THE DEEP TREKKER WORKER PACKAGE TRANSFORMS THE DTG2 FROM AN OBSERVATION CLASS ROV TO A LIGHT WORKING CLASS. BASED ON THE SAME COMPLETELY PORTABLE DESIGN OF THE DTG2, THE ADDITION OF SENSOR INTELLIGENCE AND A TWO FUNCTION GRABBER ARM PROVIDE THE PERFECT TOOL FOR EVIDENCE AND SAMPLE RETRIEVAL, TREASURE HUNTING, ENVIRONMENTAL MONITORING, OR SEARCH & RESCUE.

REDUCE THE RISK OF SENDING A DIVER IN.

THE DEEP TREKKER DTG2 WORKER IS CAPABLE OF RETRIEVING OBJECTS UP TO 45 KG, SIMPLY BY LOCKING ONTO THE OBJECT WITH THE GRABBER AND PULLING THE ROV BACK BY THE TETHER. (YES, IT REALLY IS THAT STRONG.) REDUCING THE NEED FOR YOUR DIVERS ENTERING DANGEROUS WATERS, OR REDUCING THEIR TIME IN THEIR NEXT DIVE UNNECESSARILY.



PACKAGE CONTENTS

- > DEEP TREKKER DTG2 ROV
- > 100 METERS (330 FT) TETHER
- > INTEGRATED SUPER BRIGHT SCREEN CONTROLLER
- > CARRYING CASE
- > ON-SCREEN SENSORS FOR AUTO-HEADING, AUTO-DEPTH, TEMPERATURE, AND BATTERY LEVELS
- > 2 FUNCTION GRABBER ARM

PORTABLE, AFFORDABLE, AND EASY TO USE.

INVESTIGATE THE UNDERWATER WORLD WITH OUR GAMING STYLE CONTROLLER AND INTEGRATED SUPERBRIGHT SCREEN. EASILY TRANSPORT THE ENTIRE UNIT TO ANY INVESTIGATION SITE IN ONE CARRY CASE. BEST OF ALL, NO MAINTENANCE REQUIRED.



DEEP TREKKER INC. - AYR, ONTARIO CANADA - 1-519-342-3177
SALES@DEEPTREKKER.COM - WWW.DEEPTREKKER.COM

Applications of Remote Operated Vehicle (ROV)

- Search & Rescue/Recovery
- Water Tank Inspection
- Forensic & Evidence Gathering
- EOD (Explosive Ordnance Disposal)
- MCM (Mine Countermeasures)
- Sea Port Security
- Mooring Inspections
- Feeding Assessment & Fish Husbandry
- Hydrographic Assessments
- Pond and Dam Inspection

System Contents:

- DTG2 ROV
- 100 m tether
- Heavy duty tether reel with bearings and electrical slip ring for easy tether management
- Integrated Super Bright Screen Controller
- Robust Carrying Case
- Intelligent sensor package complete with auto depth and auto heading
- 2 Function Grabber Arm
- Smart chargers
- Buoyancy weight set
- Operator manual
- 1 Year Warranty

Sensors included:

- Heading (degrees)
- Depth (meters)
- Water Temperature (degrees C)
- Pitch (degrees)
- Roll (degrees)
- Camera Angle (degrees)
- Turns Counter
- ROV Hour Counter (hours)
- Battery Level Controller (%)
- Battery Level ROV (%)
- Added ROV Intelligence
- Auto-Heading
- Auto-Depth
- Display Text overlay to live video screen

Optional Products (More add-on options are at the end of document)

- Digital Video Recorder (DVR)
- Record your work on an SD card for later review
- Auxiliary Lighting - Ideal when working in extremely dark situations, - increases lighting from 300 to 900 lumens
- Digital Video Glasses - when working in high sunlight, block out all of the sun with our digital video glasses

DEEP TREKKER DTG2 SPECIFICATIONS

ROV GENERAL SPECIFICATIONS :

WIDTH :	325 MM (12.8")
HEIGHT :	258 MM (10.2")
LENGTH :	279MM (11.0")
WEIGHT (IN AIR) :	8.5 KG (18.7 LB)
BODY MATERIAL :	PAINTED CAST ALUMINUM
WINDOW MATERIAL :	PMMA
DEPTH RATING :	
STARTER :	75 M (250 FT)
PRO :	75 M (250 FT)
SMART :	125 M (410 FT)
WORKER :	125 M (410 FT)
OPERATING TEMPERATURE :	-5°C TO 40°C (23°F – 104°F)
SPEED :	2.5 KNOTS
WARRANTY :	1 YEAR – PARTS AND LABOUR



ROV ELECTRICAL SYSTEM :

SYSTEM VOLTAGE :	19.2 VDC
BATTERY RUN TIME :	4 - 8 HOURS
BATTERY RECHARGE :	3 HOURS
THRUSTER CONTROL :	INDEPENDENT INFINITELY VARIABLE 100% REVERSIBLE



LIGHTS AND CAMERA :

CAMERA COLOUR :	700 HD 0.01 LUX WIDE FOCUS RANGE 270 DEGREES OF ROTATION
-----------------	---

FLOOD LIGHT :	HIGH POWERED HIGH EFFICIENCY LED FLOOD TRACKING WITH CAMERA
---------------	---



ROV TETHER :

TETHER DIAMETER :	5.0 MM (0.19')
TETHER LENGTH :	50 M, 75M, 100M, 150M (164 - 492 FT)
CUSTOM LENGTHS :	UP TO 400 M (1,312 FT)
TETHER WIGHT :	NEUTRALLY BUOYANT IN WATER
TETHER CONSTRUCTION :	POLYURETHANE OUTER JACKET WITH EMBEDDED LIGHT WEIGHT SYNTHETIC FIBERS

MAXIMUM WORKING STRENGTH :	25 KG (55 LB)
MINIMUM BREAKING STRENGTH :	90 KG (200 LB)



ROV CONTROLLER :

CONTROLLER LEDS INDICATE :	POWER ON FLOOD LIGHT ON LOW CONTROLLER BATTERIES LOW ROV BATTERIES LEFT THRUSTER ERROR RIGHT THRUSTER ERROR COMMUNICATION ERROR LEAK ALARM PITCH STALL ERROR
----------------------------	--

THRUSTER CONTROL :	2 AXIS JOYSTICK – INFINITELY VARIABLE
PITCH CONTROL :	1 AXIS JOYSTICK – INFINITELY VARIABLE
CAMERA CONTROL :	2 BUTTONS (UP AND DOWN)
FLOOD LIGHT CONTROL :	1 ON-OFF BUTTON



2 FUNCTION GRABBER ARM COMPLETE,	360 DEGREE ROTATE AND OPEN/CLOSE
----------------------------------	----------------------------------



DEEP TREKKER DTG2 PACKAGES

DTG2 Starter
100m depth rating



50m (164ft)
Tether

DTG2 Pro
100m depth rating



75m (250ft)
Tether

DTG2 Smart
150m depth rating



75m (250ft)
Tether

Sensors
(heading&depth)

DTG2 Worker
150m depth rating



100m (330ft)
Tether

Sensors
(heading&depth)

Two Function
Grabber Arm



CUSTOMIZE WITH ADD-ONS



Available third-party add-ons



Deep Trekker Inc. - 40 Melair Drive, Ayr Ontario, Canada N0B 1E0 - 519-342-3177 - sales@deeptrekker.com

For further info and price quote, please contact:

MDI-Canada

21 Deepglade Cr. Toronto, Ontario, M2J 2B3, Canada
Tel: 1-416-916-1558, 1-416-302-8431 Fax: 1-416-916-1666
Email: sales@mdicanada.ca, mdicanada@rogers.com
Website: www.mdicanada.ca