

www.cantronics.com

Overview

TR1100 series of thermal infrared camera is the ultimate night vision security product designed for medium range surveillance in total darkness.

Cantronic uses the latest state of the art passive infrared thermal seeking technology in the TR1100 Series cameras. This series is a smaller, lighter, thermal imaging camera which can provide high performance and flexible applications. A variety of fields of view are available to fit your surveillance applications.

Using the high sensitivity 320x240 infrared FPA, the camera provides a complete night vision solution in the 8 to 14 μm wavelength ranges. The TR1100 is an excellent quality, competitively priced night vision camera.

Outstanding Features

- 320x240 Microbolometer uncooled passive Infrared FPA Detector
- High thermal sensitivity < 50mK
- Medium range detection
- 24 / 7 operation
- Thermal seeking, passive infrared
- Automatically adjusts contrast and brightness
- Camera remote control via RS-232C for NUC, video format, electronic zoom and etc.
- Environmental enclosure housing
- Long operating life with no cooler required

Performance Options & Accessories

- 8mm F/1 Lens (standard)
- 14mm F/1 Lens
- 25mm F/1 Lens
- Pan and Tilt Drive
- Mounting Bracket
- Camera Controls Interface
- Heater Kit for Operating Temperature up to -50°C

Product Image

TR1100 Medium Range Thermal Security Camera

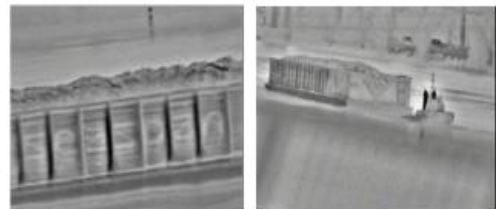


* Picture shown may be different to actual product depending on applications.

Applications

This unique combination of night vision power is Cantronic's solution to the increased need for security and homeland protection at a broad range of facilities and infrastructure such as:

- Bridges, Airports, Seaports, Subways
- Military Facilities
- Nuclear Power Plants
- Perimeter Security
- Industrial Applications
- Governmental Facilities



Specifications

Model	TR1100-8	TR1100-14	TR1100-25	TR1100-50
Lens	8.5mm	14mm	25mm	50mm
Field of View (HxV)	45.3° x 34.8°	30° x 22.8°	17° x 12.9°	8.6° x 6.5°
Detector	Uncooled Microbolometer with TE Cooler			
Array Format	320(H) x 240(V)			
Wavelength	8µm to 14µm			
Focus Method	Manual			
Thermal Sensitivity	< 50mK			
Frame Rate	30Hz NTSC or 25Hz PAL			
Zoom	2X / 4X Electronic Zoom			
Night Vision Method	Thermal Seeking, Passive Infrared			
Video Output	NTSC or PAL			
Serial Interface	RS-232C			
Power Input	12VDC 0.8A Typical, 3.3A Max.			
Operating Temperature	-20°C to 50°C			
Storage Temperature	-20 °C to 85 °C			
Enclosure Dimension (L x W x H)	347 x 138 x 128 mm			
Camera Mounting	Mounting Distance 50.8mm (2") with 1/4" Screw			
Weight	2 kg	2.1 kg	2.2 kg	2.4 kg

How to Order

TR1100 – 8 N

Lens
 8 : 8.5mm lens
 14 : 14 mm lens
 25 : 25 mm lens
 50 : 50mm lens

Video Output
 N : NTSC
 P : PAL



Picture shown with optional mounting bracket & GE Windows

Schedule

For more Info & Price Quote, Please Contact:

MDI-Canada

21 Deepglade Cr. Toronto, ON. M2J 1B3, Canada
 Email: sales@mdicanada.ca, mdicanada@rogers.com
 Website: www.mdicanada.ca